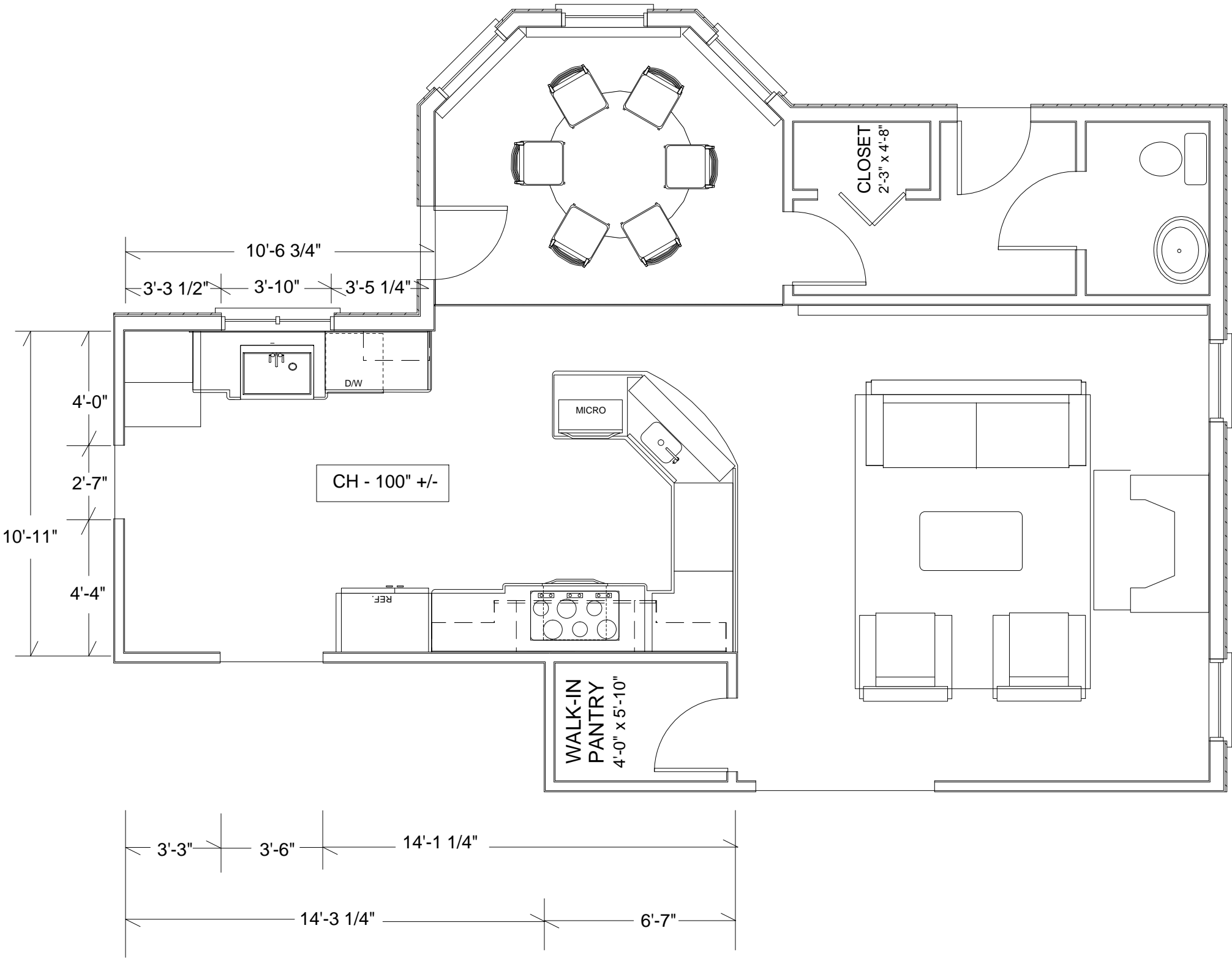
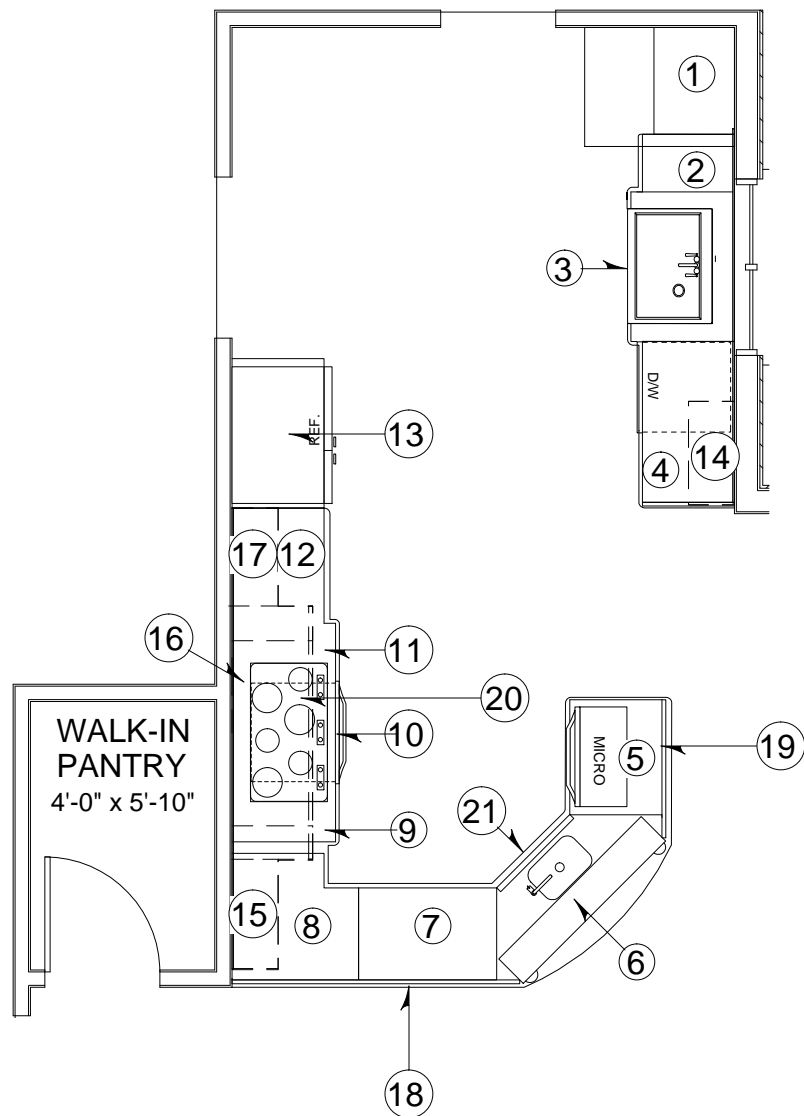


FLOOR PLAN - OPTION 3



KITCHEN CABINET SPECIFICATIONS



- 1 23" W X 21"D - TALL PANTRY CABINET, EXTEND STILE LEFT, FINISHED END RIGHT \*
- 2 15" W X 24"D X 34 1/2"H - DOOR/DRAWER BASE CABINET, HINGE LEFT, FURNITURE FOOT, FINISH LEFT
- 3 39" W X 24" D X 34 1/2"H - FARMERS SINK CABINET, FLUSH TOE WITH STYLE C FEET CUTOUT LEFT/RIGHT, APPLY PILASTER TO RIGHT & LEFT STILE, FURNITURE FEET, FINISH END LEFT/RIGHT, PULL CABINET 3" OFF WALL
- 4 18"W X 24"D X 34 1/2"H - DOOR/DRAWER BASE CABINET, HINGE RIGHT, FURNITURE FOOT, FINISHED PANEL RIGHT
- 5 30" W X 24" D X 34 1/2" H - MICROWAVE BASE CABINET, FURNITURE FOOT, FINISHED PANEL LEFT
- 6 52" W X 8"D X 34 1/2"H - TRIPLE GLASS DOOR BASE CABINET, HINGE ALL LEFT, WIDE STILE LEFT & RIGHT, APPLY SPLIT POST TO STILE
- 7 33" W X 24"D X 34 1/2"H - DBL DRAWER/DBL DOOR BASE CABINET
- 8 36" W X 34 1/2" H - BASE LAZY SUSAN CABINET
- 9 9" W X 24" D X 34 1/2" H - PULLOUT BASE CABINET, FLUSH TOE, FINISH LEFT, PULL CABINET FORWARD 3"
- 10 39" W X 24" D X 34 1/2" H - BASE OVEN CABINET, FLUSH TOE WITH STYLE C FEET CUTOUT LEFT/RIGHT, APPLY PILASTERS TO LEFT/RIGHT STILE, PULL CABINET FORWARD 3"
- 11 9" W X 24" D X 34 1/2" H - PULLOUT BASE CABINET, FLUSH TOE, FINISH RIGHT, PULL CABINET FORWARD 3"

KITCHEN CABINET SPECIFICATIONS - CONTINUED

- 12

30" W X 24" D X 34 1/2" H - THREE DRAWER BASE CABINET
- 13

39" W X 24" D X 96" H - REFRIGERATOR CABINET, FINISH END LEFT, FINISH PANEL RIGHT
- 14

27" W X 12"D X 27" H - DBL DOOR WALL CABINET, FINISH PANEL END LEFT/RIGHT  
STACK WITH:  
27"W X 12" D X 15" H - DBL GLASS DOOR WALL CABINET, FINISH PANEL END LEFT/RIGHT
- 15

27" W X 12"D X 27" H - DBL DOOR WALL CABINET, EXTEND STILE RIGHT, FINISH PANEL END LEFT  
STACK WITH:  
27"W X 12" D X 15" H - DBL GLASS DOOR WALL CABINET, EXTEND STILE RIGHT, FINISH PANEL END LEFT
- 16

33" W x 15"H - TWO DBL GLASS DOOR WALL CABINETS, ONE FINISHED END LEFT, ONE FINISHED END RIGHT \*\*
- 17

24" W X 12"D X 27" H - DBL DOOR WALL CABINET, EXTEND STILE LEFT  
STACK WITH:  
24"W X 12" D X 15" H - DBL GLASS DOOR WALL CABINET, EXTEND STILE LEFT
- 18

CUSTOM BASE BACK PANEL - 34 1/2" H X APPROX. 75" WIDE, EXTEND STILE LEFT/RIGHT \*\*\*
- 19

CUSTOM BASE BACK PANEL - 34 1/2" H X APPROX. 36" WIDE, EXTEND STILE LEFT/RIGHT \*\*\*
- 20

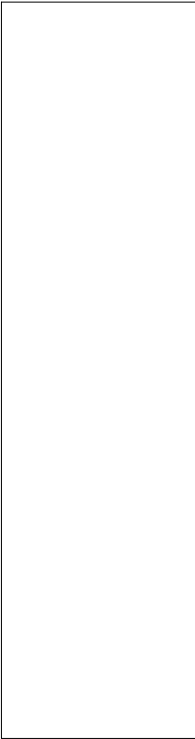
CUSTOM GROTTO UNIT WITH PULLOUT SPICE CABINETS - OVERALL SIZE APPROX. 66" W X 18" D X 45" H, FINAL SIZE TBD BY WALL HOOD AND CABINET MFG SPECS.
- 21

27" W X 34 1/2" H - DBL DOOR/FALSE DRAWER SINK FRONT PANEL

\* FINISHED CABINET HEIGHT TBD BY FINISHED CEILING HEIGHT

\*\* FINISHED CABINET DEPTH TBD BY WALL HOOD SPECIFICATIONS

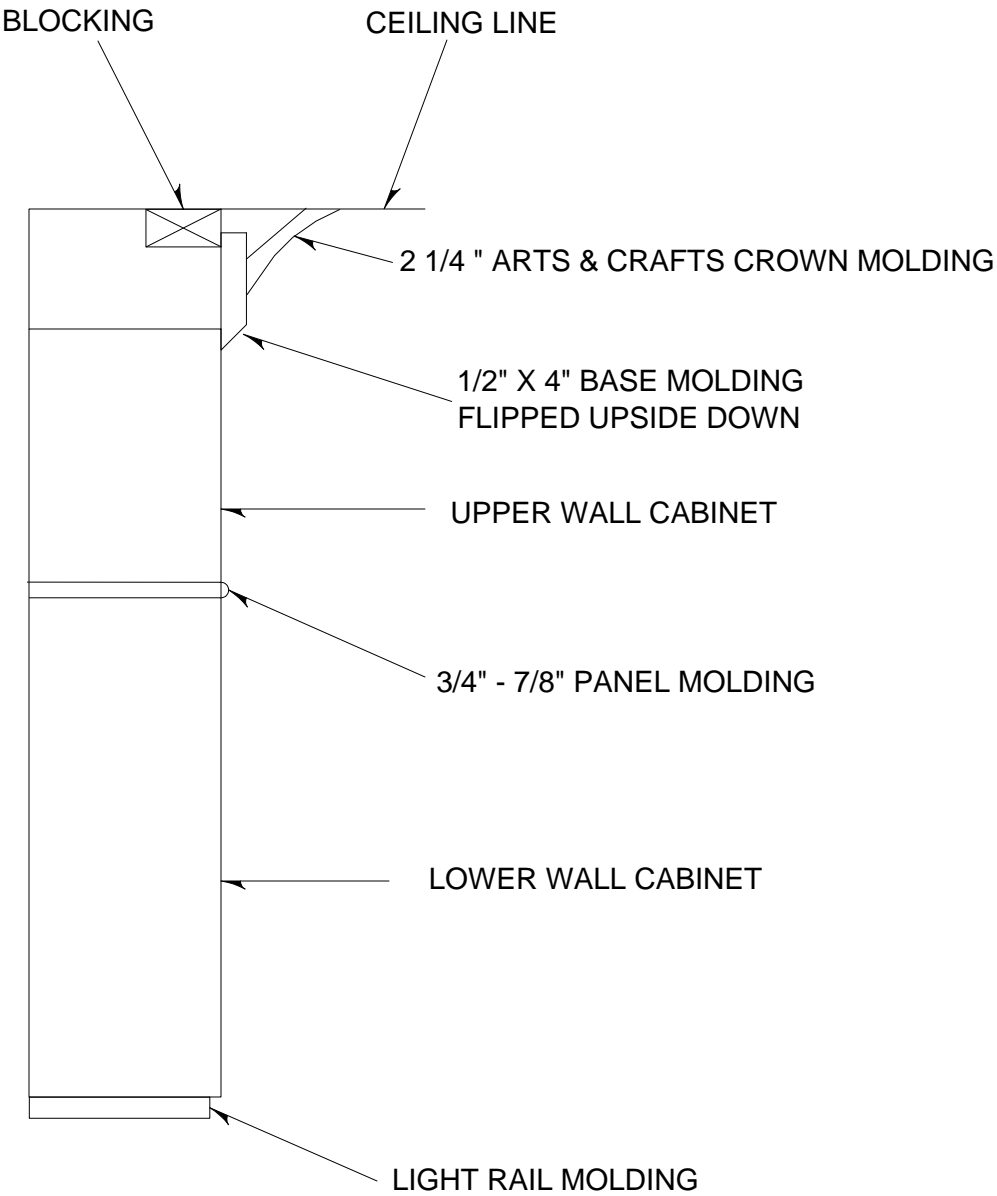
\*\*\* FINISHED WIDTH TBD BY SITE MEASUREMENTS AND CABINET MFG SPECS



KITCHEN CABINET ELEVATION VIEWS

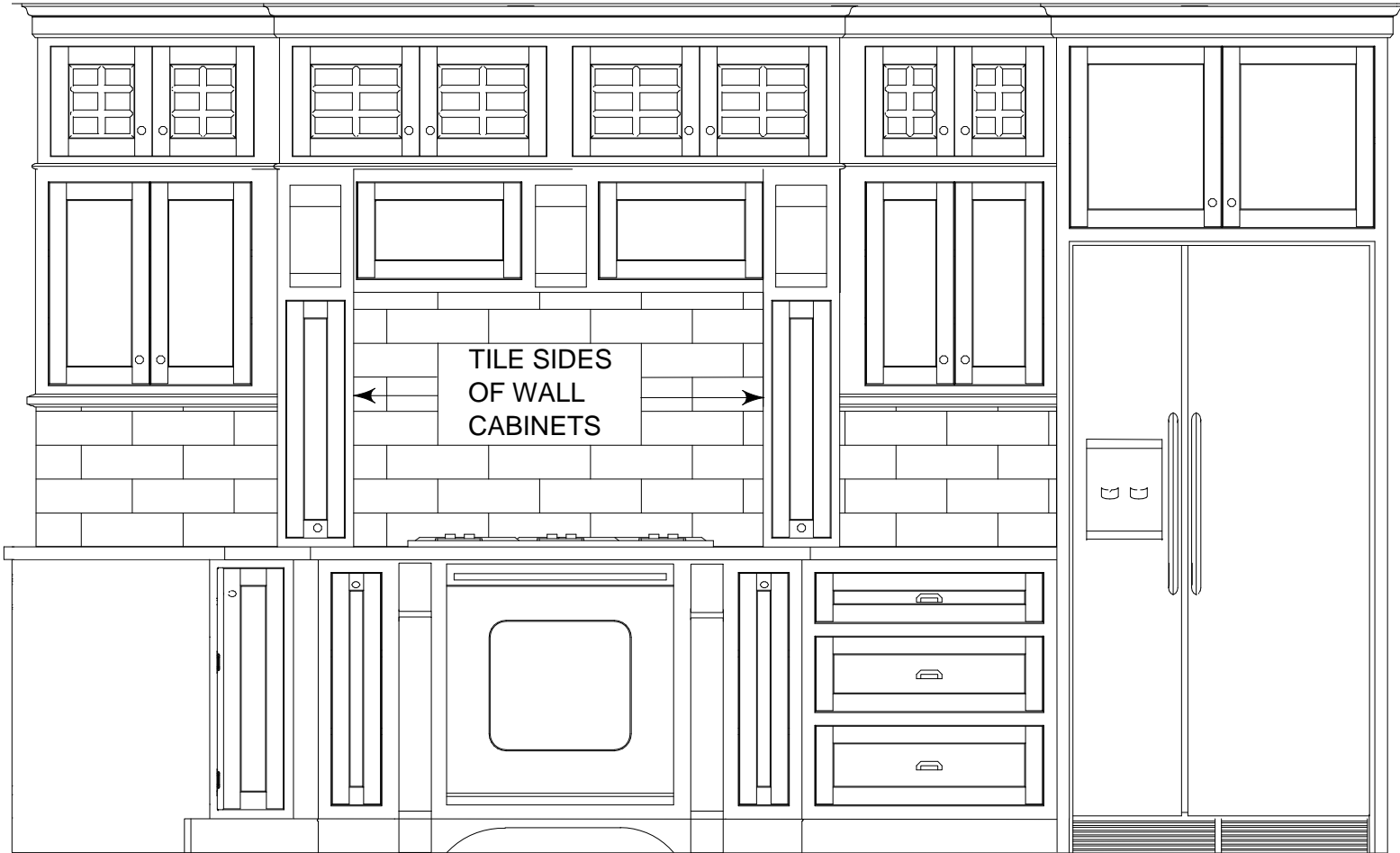


SINK WALL VIEW



WALL CABINET MOLDING DETAIL

KITCHEN CABINET ELEVATION VIEWS



GROTTO WALL VIEW

PENINSULA VIEW FACING FIREPLACE

